

MONTHLY MEMBERSHIP PROGRESS REPORT

LOCATION ALBERTA

District C 1

Results as of: 3/31/2023

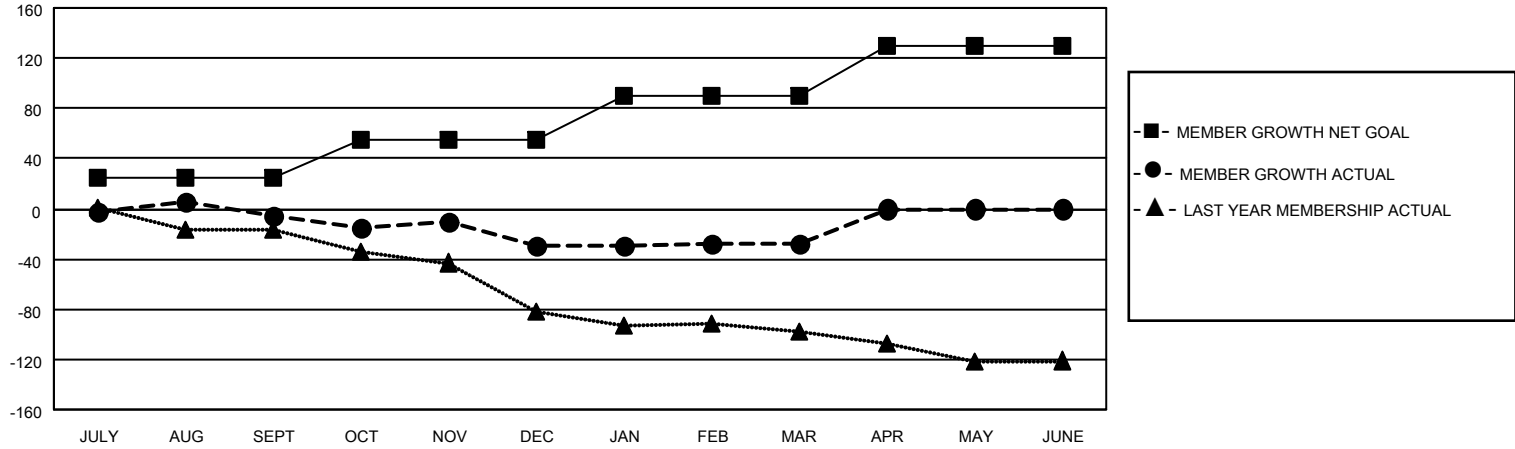
Clubs			
RESULTS FOR 2022-2023			
QUARTER	NEW CLUB GOAL	NEW CLUBS	DROPPED CLUBS
JULY/AUG/SEPT	0	0	1
OCT/NOV/DEC	1	0	0
JAN/FEB/MAR	0	0	0
APR/MAY/JUNE	1	0	0

Members			
RESULTS FOR 2022-2023			
QUARTER	MEMBER GROWTH NET GOAL	MEMBER GROWTH ACTUAL	DROPPED MEMBERS ACTUAL (including transfers)
JULY/AUG/SEPT	25	33	34
OCT/NOV/DEC	30	63	85
JAN/FEB/MAR	35	37	32
APR/MAY/JUNE	40	0	0

GOALS AND ACTUAL NEW CLUBS CUMULATIVE



GOALS AND ACTUAL MEMBERS CUMULATIVE



DROPPED CLUBS: 1

35 CLUBS OF 90 ADDED 1 OR MORE NEW MEMBERS

GENDER DISTRIBUTION

MALE	1,004 (61.75%)
FEMALE	622 (38.25%)
NON BINARY	0 (0.00%)
PREFER NOT TO ANSWER	0 (0.00%)

DROPPED MEMBERS

[CLICK HERE FOR CUMULATIVE MEMBERSHIP DATA](#)

DECEASED	17
CLUB CANCELLED	0
OTHER	134
TOTAL	151

TOTAL FAMILY UNIT MEMBERS 335

FAMILY MEMBERS PAYING HALF DUES 169